

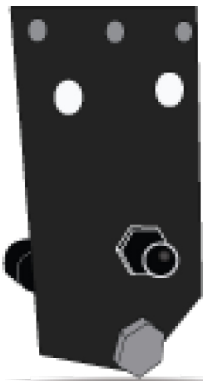


Gaylords Tech Department is constantly making the best better, here are some common hardware renderings which might be slightly different upon arrival. For ANY installation questions please email us Customerservice@gaylordslids.com

Please visit us on the web for any additional Info @ WWW.GAYLORDSLIDS.COM

Gaylord's would like to thank you for your custom lid purchase. We greatly appreciate your business and strive to produce top quality custom bed covers for your custom truck!

(2) Shock Mounts w/ ball studs



(2) Gas Shocks



(2) Side Rails



Custom Hinge System (2 Pieces)



(2) Strikers



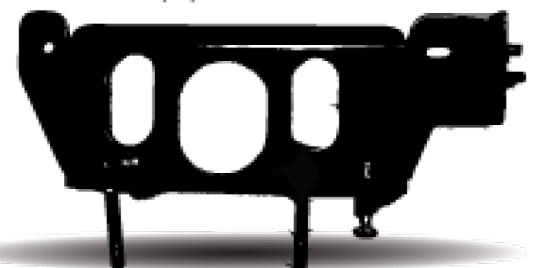
Side Rail Clamps



Dual Locks and Keys (2)



(2) Saddle's



PAGE 1

WARNING: If you are not familiar with the use of hand tools or are not accustomed to working on motor vehicles, have a dealer or accessory shop install the Kustom Lid. Carefully read all the instructions prior to attempting to fit the Lid. Before fitting the Lid, park the vehicle on level ground in a well lit area and apply the emergency brake. After installation, check that the Lid works correctly and securely locks shut. Periodically check all fasteners for tightness. Retighten only the loose fasteners. When using power or hand tools, always wear the correct protective clothing recommended by the tool manufacturer.

"OG" Series Universal Installation Instructions

Visit our Site for any Additional Info @ WWW.GAYLORDSLIDS.COM



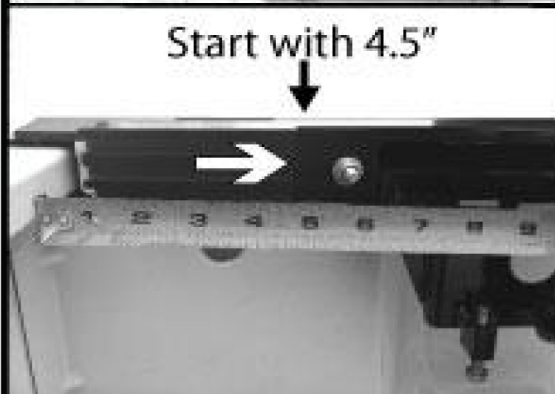
Gaylord's Kustom Lid's are mold formed and have very little variances, if you your cover is not fitting properly please call in or send photos to Info@Gaylordslids.com and we will reply the same or next business day if after hours.

**** BEFORE INSTALLATION PLEASE TAPE UP THE BED TO PREVENT DAMAGE****



Placing Hardware Onto Truck Bed

- Place the hardware rails on the truck bed , they should resemble the photo provided. The rails come mostly pre assembled and will follow this order from the rear.. Striker, Shock-mount, Saddle.
- Bolt the rail clamps in behind the front hinge, and right in front of the striker. (This may vary slightly on certain trucks)



Mounting Saddle

- Measuring back from the bulk head of the truck you will mount the saddle 4.5" back as shown. The rails themselves can be about 1/2" from touching the front of the bed.
- On SOME trucks the bulkhead is much thicker/thinner then others and this measurement may vary. You may easily push the hinges forward if needed, being they are clamp in.



Placing Hinge Onto Saddle

- Once the saddle is mounted you may set the hinge onto the saddle. Lightly tighten the thumb knobs so the hinge can still slide up or down but has some resistance. (This will be helpful when drilling the hinge into the bottom of the cover). There is an adjustment bolt to lift the hinge once the hinge has been set on to meet the bottom of the cover.



Preparing Lid to be Mounted

- With the assistance of another person, place the lid onto the truck bed and "square" it up to your preferences. Look down the sides from the rear to verify that it is on straight. If cover is not installed without care, rubbing will occur.
- There should be a gap of about 1/8" from the back of the lid to the tailgate.

PAGE 2

"OG" Series Universal Installation Instructions

Visit us on the web @ WWW.GAYLORDSLIDS.COM



**** BEFORE INSTALLATION PLEASE TAPE UP THE BED TO PREVENT DAMAGE****



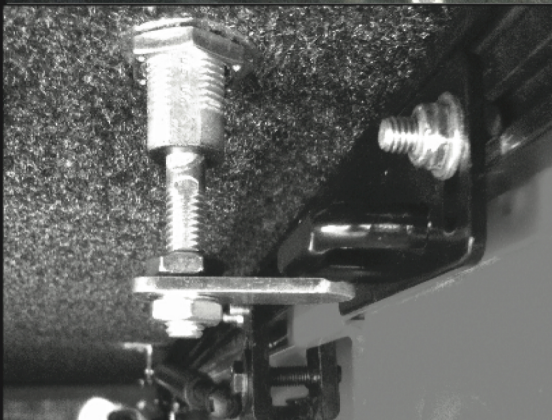
Drilling Hinges Into Bottom of Cover

- Once cover location is finalized, crawl into the truck bed, lift the with your power/air drill and install 4 self tappers on each side. The lid has been pre fabricated with metal plates inside the lid for extra strength.
- The person who helped set the lid on the truck will need to push down on each side as you drill.



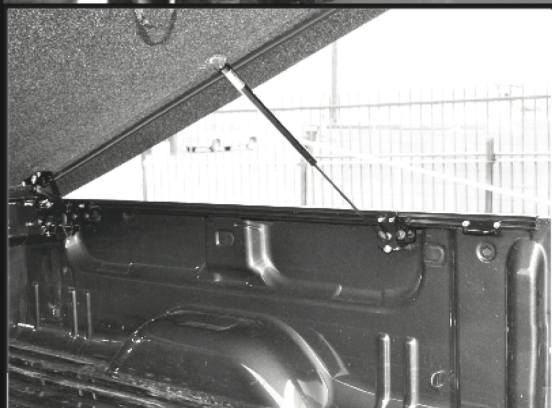
Mounting Shocks

- Measuring back from the shock mount pre installed on the lid, mount the shock mount on rail **18" back for 27" shocks** or **13" for 20" shocks**.
- Open the lid and hook up the shocks. Notice one side of the shock is thicker then the other, the thick end will be "UP".



Adjusting Locks

- With the lid shut and tailgate down, install the cam in-between the two lock nuts. (cam is the piece that swings over and goes under the striker)
- Insert the key into the lock and turn it back in forth to determine the best mounting position of the cam. (The lock pulls up when locked)



•Photo of install completed•

Enjoy Your New Gaylord's Lid!!

- To remove the cover, you disconnect the shock ends from the lid with a flat head screw driver. Slide the head of the screw driver under the metal C clip holding it on and lift up.
- Once the shocks have been disconnected undo the two thumb knobs holding each hinge to the saddle and you may easily lift the cover off with the help of a buddy.

PAGE 3